

Integral™ Plugin Getting Started Guide

Applies to:

Integral 24.4.1

Phoenix 8.2.2, 8.3.4, 8.3.5, 8.4

Legal Notice

Phoenix® WinNonlin®, Phoenix NLME™, IVIVC Toolkit™, CDISC® Navigator, Certara Integral™, PK Submit™, AutoPilot Toolkit™, Job Management System™ (JMS™), Trial Simulator™, Validation Suite™ copyright ©2005-2024, Certara USA, Inc. All rights reserved. This software and the accompanying documentation are owned by Certara USA, Inc. The software and the accompanying documentation may be used only as authorized in the license agreement controlling such use. No part of this software or the accompanying documentation may be reproduced, transmitted, or translated, in any form or by any means, electronic, mechanical, manual, optical, or otherwise, except as expressly provided by the license agreement or with the prior written permission of Certara USA, Inc.

This product may contain the following software that is provided to Certara USA, Inc. under license: ActiveX® 2.0.0.45 Copyright © 1996-2024, GrapeCity, Inc. AngleSharp 0.9.9 Copyright © 2013-2024 AngleSharp. All rights reserved. Autofac 4.8.1 Copyright © 2014 Autofac Project. All rights reserved. Crc32.Net 1.2.0.5 Copyright © 2016 force. All rights reserved. Formula One® Copyright © 1993-2024 Open-Text Corporation. All rights reserved. Json.Net 7.0.1.18622 Copyright © 2007 James Newton-King. All rights reserved. LAPACK Copyright © 1992-2013 The University of Tennessee and The University of Tennessee Research Foundation; Copyright © 2000-2013 The University of California Berkeley; Copyright © 2006-2013 The University of Colorado Denver. All rights reserved. Microsoft® .NET Framework Copyright 2024 Microsoft Corporation. All rights reserved. Microsoft XML Parser version 3.0 Copyright 1998-2024 Microsoft Corporation. All rights reserved. MPICH3 1.4.1 Copyright © 2002 University of Chicago. All rights reserved. Minimal Gnu for Windows (MinGW, <http://mingw.org/>) Copyright © 2004-2024 Free Software Foundation, Inc. NLog Copyright © 2004-2024 Jaroslaw Kowalski <jaak@jkowalski.net>. All rights reserved. Reinforced.Typings 1.0.0 Copyright © 2024 Reinforced Opensource Products Family and Pavel B. Novikov personally. All rights reserved. RtfToHtml.Net 3.0.2.1 Copyright © 2004-2017, SautinSoft. All rights reserved. Sentinel RMS™ 8.4.0.900 Copyright © 2006-2024 Gemalto NV. All rights reserved. Syncfusion® Essential Studio for WinForms 16.4460.0.42 Copyright © 2001-2024 Syncfusion Inc. All rights reserved. TX Text Control .NET for Windows Forms 26.0 Copyright © 19991-2024 Text Control, LLC. All rights reserved. Websites Screenshot DLL 1.6 Copyright © 2008-2024 WebsitesScreenshot.com. All rights reserved. This product may also contain the following royalty free software: CsvHelper 2.16.3.0 Copyright © 2009-2024 Josh Close. DotNetbar 1.0.0.19796 (with custom code changes) Copyright © 1996-2024 DevComponents LLC. All rights reserved. ImageMagick® 5.0.0.0 Copyright © 1999-2024 ImageMagick Studio LLC. All rights reserved. IMSL® Copyright © 2024 Rogue Wave Software, Inc. All rights reserved. Ninject 3.2 Copyright © 2007-2012 Enkari, Ltd. Software for Locally-Weighted Regression Authored by Cleveland, Grosse, and Shyu. Copyright © 1989, 1992 AT&T. All rights reserved. SQLite (<https://www.sqlite.org/copyright.html>). Ssh.Net 2016.0.0 by Olegkap Drieseng. Xceed® Zip Library 6.4.17456.10150 Copyright © 1994-2024 Xceed Software Inc. All rights reserved.

Information in the documentation is subject to change without notice and does not represent a commitment on the part of Certara USA, Inc. The documentation contains information proprietary to Certara USA, Inc. and is for use by its affiliates' and designates' customers only. Use of the information contained in the documentation for any purpose other than that for which it is intended is not authorized. NONE OF CERTARA USA, INC., NOR ANY OF THE CONTRIBUTORS TO THIS DOCUMENT MAKES ANY REPRESENTATION OR WARRANTY, NOR SHALL ANY WARRANTY BE IMPLIED, AS TO THE COMPLETENESS, ACCURACY, OR USEFULNESS OF THE INFORMATION CONTAINED IN THIS DOCUMENT, NOR DO THEY ASSUME ANY RESPONSIBILITY FOR LIABILITY OR DAMAGE OF ANY KIND WHICH MAY RESULT FROM THE USE OF SUCH INFORMATION.

Destination Control Statement

All technical data contained in the documentation are subject to the export control laws of the United States of America. Disclosure to nationals of other countries may violate such laws. It is the reader's responsibility to determine the applicable regulations and to comply with them.

United States Government Rights

This software and accompanying documentation constitute “commercial computer software” and “commercial computer software documentation” as such terms are used in 48 CFR 12.212 (Sept. 1995). United States Government end users acquire the Software under the following terms: (i) for acquisition by or on behalf of civilian agencies, consistent with the policy set forth in 48 CFR 12.212 (Sept. 1995); or (ii) for acquisition by or on behalf of units of the Department of Defense, consistent with the policies set forth in 48 CFR 227.7202-1 (June 1995) and 227.7202-3 (June 1995). The manufacturer is Certara USA, Inc., 100 Overlook Center, Suite 101, Princeton, New Jersey, 08540.

Trademarks

AutoPilot Toolkit, Integral, IVIVC Toolkit, JMS, Job Management System, NLME, Phoenix, PK Submit, Trial Simulator, Validation Suite, WinNonlin are trademarks or registered trademarks of Certara USA, Inc. NONMEM is a registered trademark of ICON Development Solutions. S-PLUS is a registered trademark of Insightful Corporation. SAS and all other SAS Institute Inc. product or service names are registered trademarks or trademarks of SAS Institute Inc. in the USA and other countries.

Sentinel RMS is a trademark of Gemalto NV. Microsoft, MS, .NET, SQL Server Compact Edition, the Internet Explorer logo, the Office logo, Microsoft Word, Microsoft Excel, Microsoft PowerPoint®, Windows, the Windows logo, the Windows Start logo, and the XL design (the Microsoft Excel logo) are trademarks or registered trademarks of Microsoft Corporation. Pentium 4 and Core 2 are trademarks or registered trademarks of Intel Corporation. Adobe, Acrobat, Acrobat Reader, and the Adobe PDF logo are registered trademarks of Adobe Systems Incorporated. All other brand or product names mentioned in this documentation are trademarks or registered trademarks of their respective companies or organizations.

Table of Contents

Installation	5
Testing the Installation	8

<This page intentionally left blank>

Installation

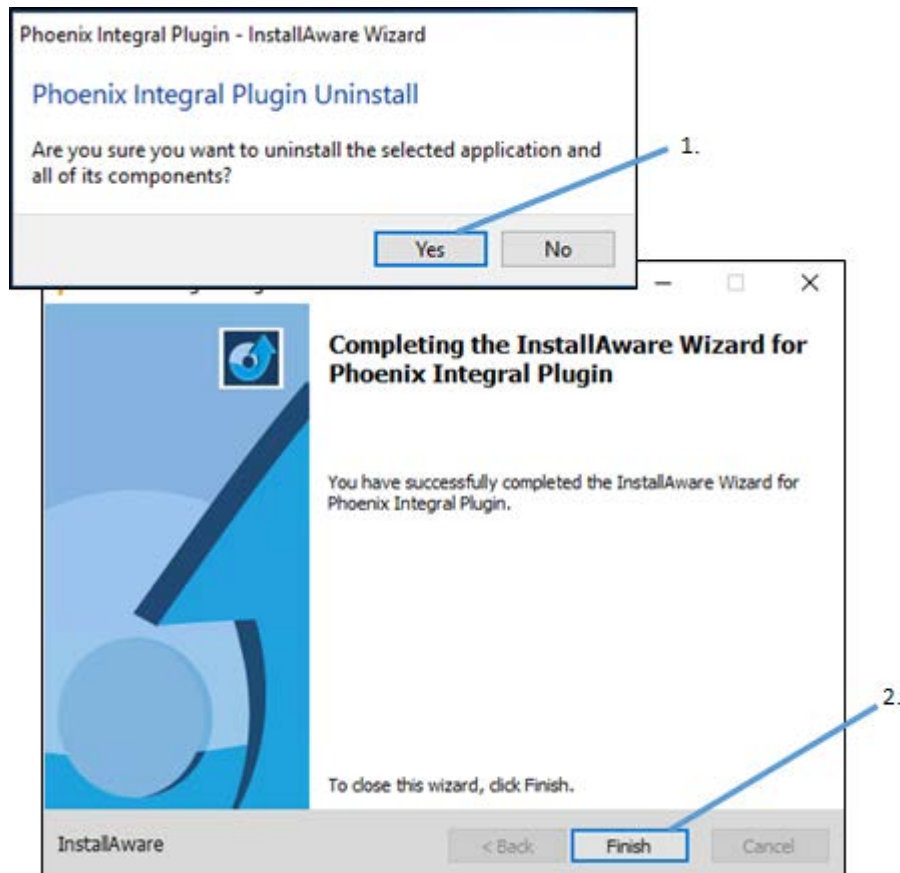
Installing Integral Plugin for Phoenix

1. Extract the ZIP file that contains the installation files.
2. Double-click installer executable.
3. In the *User Account Control* dialog, enter the username and password credentials for an administrator account.

For Windows Server: right-click the installer executable and select **Run As**. Enter Administrative credentials in the *User Account Control* dialog.

Uninstall previous Integral installation

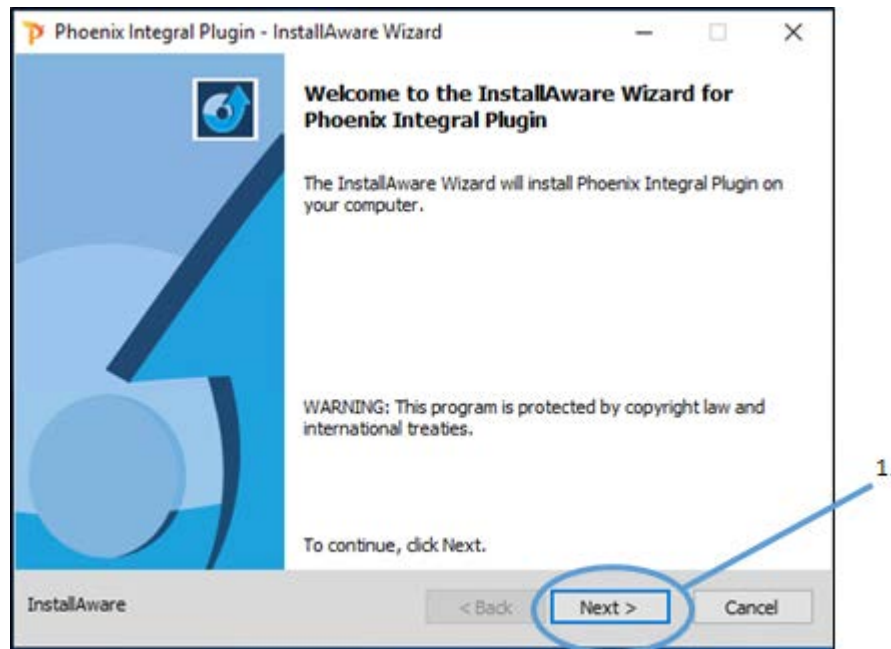
1. The installer wizard checks for existing Integral installations. If one is found, click **Yes** to proceed to uninstall it.



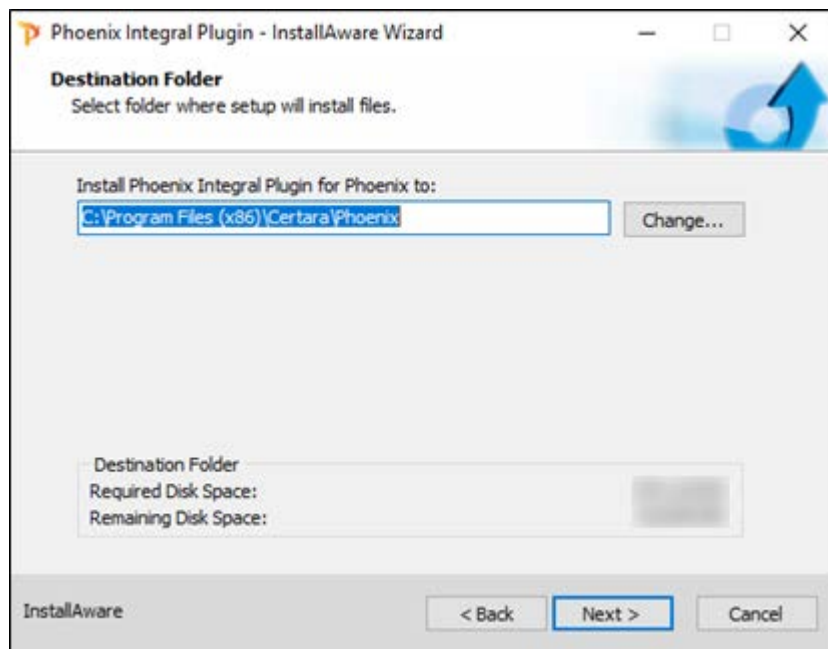
2. When the uninstall is complete, click **Finish**.
3. To continue with the Integral plugin installation, double-click the installer executable again.

Continue Integral plugin installation

If no previous installation of the Integral plugin is found, the installer wizard displays the Welcome screen.



1. On the Welcome screen, click **Next** to define the location for the installation.

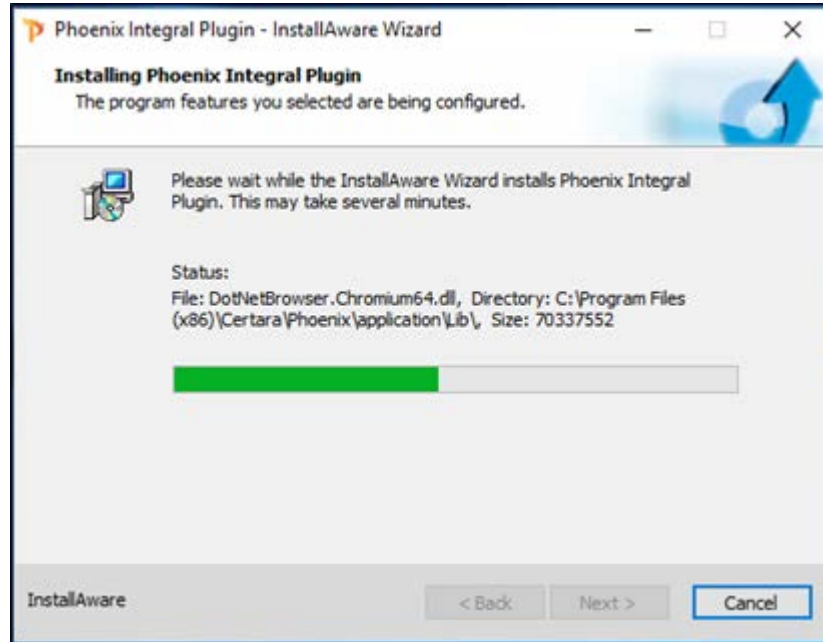


2. In the Destination Folder screen, it is recommended that the default location be accepted for the Plugin installation.

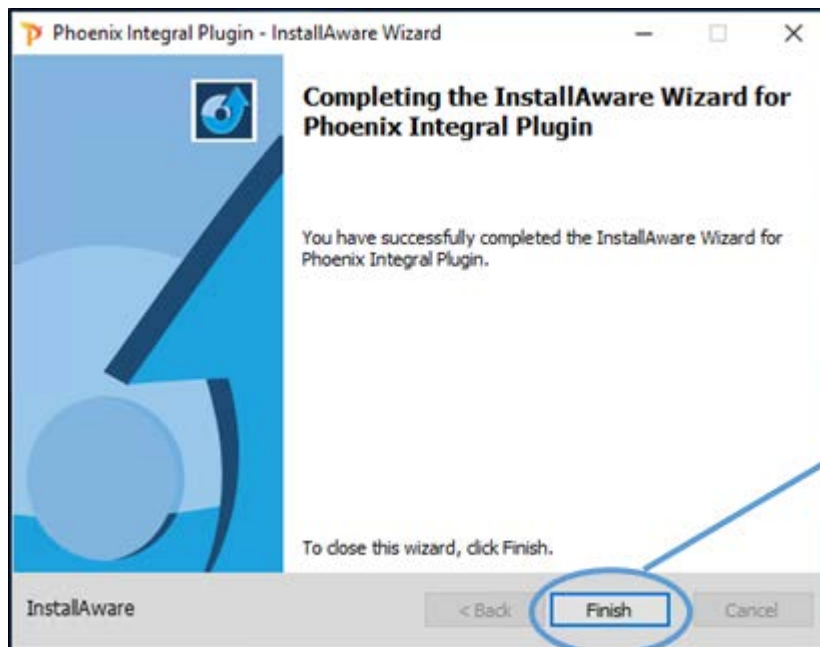
Even though you can edit the location field or use the **Change** button to select a different location, it is strongly discouraged as this will cause the Phoenix Installation Test Case in the Validation Suite to fail.

3. Click **Next** to start the install.

The next screen shows the progress of the installation.



4. Once the installation is complete, click **Finish** to exit the installer.

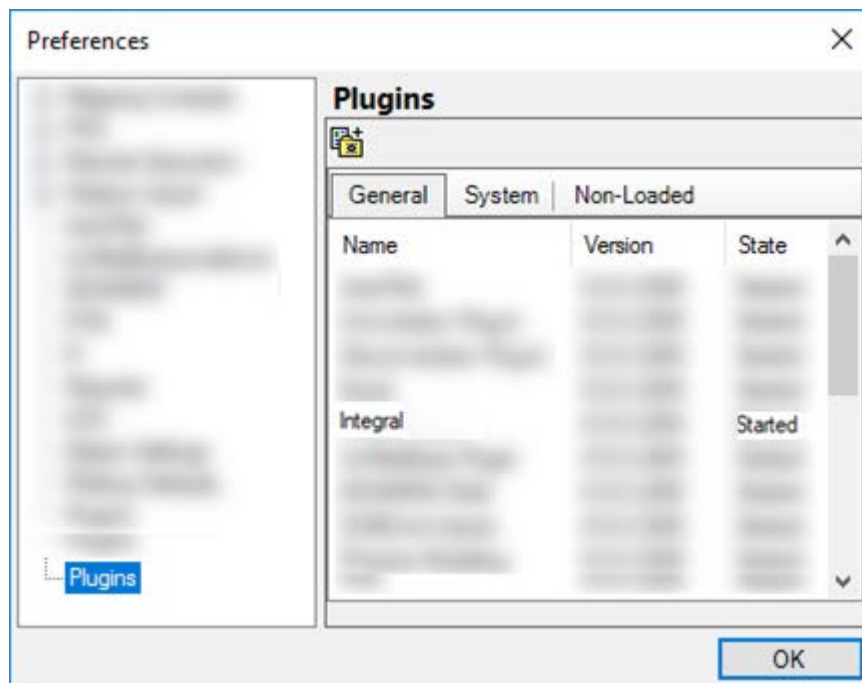


Testing the Installation

Confirm installation of the Integral plugin for Phoenix



1. Double-click the Phoenix icon (Phoenix) on your desktop to start Phoenix.
2. Verify that the **Integral** menu item appears in the Phoenix toolbar.
3. In the *Preferences* dialog, click **Plugins** to view the list of available plug-ins.



4. Verify that Integral is listed as Started in the **General** tab.
5. Click **OK** to exit the *Preferences* dialog.